



Program for Deaf Adults

Academic Studies-English

Academic Studies-Math

GED Bridge to College for Deaf Adults

Continuing Education for Deaf Adults

Computer Skills

American Sign Language

Intensive Study in American Sign Language

Mommy & Me Baby Fingers

Interpreter Education Projects



Program for Deaf Adults

The Program for Deaf Adults provides the largest, most comprehensive model post-secondary program for Deaf and Hard of Hearing students in the New York City area. Course areas offered under Continuing Education include Academic Studies for Deaf Adults, College Preparation, Individual Instruction, Computer Skills Training, Driver's (Learner's Permit) Education for Deaf Adults, American Sign Language, Mommy & Me classes, and much more. Individuals receiving Public Assistance or Social Security Income may be eligible for a 50% waiver but only after instructor fees are met. This does not include Driver's (Learner's Permit) Education for Deaf Adults, Intensive Study in ASL and Individual Instruction..

Academic Studies for Deaf Adults (ASDA) English Literacy Program

Academic Studies for Deaf Adults (ASDA) English Literacy Program is designed for all Deaf and Hard-of-Hearing students who communicate in American Sign Language and wish to improve their English literacy in order to effectively communicate with their superiors and colleagues in the employment setting. All levels of reading and writing classes have access to sophisticated instructional technology, including computer labs and Smart classrooms. The program includes 5 levels of English classes and requires testing for reading, writing and computer skills prior to registration for appropriate placement. As a continuing education student, you may also have access to a self-contained academic class in writing and reading if you have college level English literacy skills. Course grades are determined by attendance, participation, grades on quizzes, homework assignments and a final exam. To schedule an appointment for a placement test, call Roxann Richards-Chattoo @ (718) 482-5353 VP/TTY or RRICARDS@lagcc.cuny.edu.

ASDA Level II - Reading

Are you a new reader? In this course you'll practice reading both fiction and non-fiction, discuss your understanding, write brief summaries and reactions, and answer questions about what you have read. You will also prepare a storybook to read "aloud" to the class. For students who score below a 2 on the TABE.

Tues & Thurs Jan 13 - Mar 24 (20 sessions/50 hours)
5:45 pm - 8:15 pm \$480 A16RDG002A

ASDA Level II - Writing

Are you a new writer? In this course, you will write approximately ten short compositions about picture stories, yourself and other people. You will learn how to place words and phrases into their proper position in an English sentence, correct the sentences, and type them into paragraph form. At mid-term, you'll write personal diary entries using the past tense. Co-requisite: Keyboarding & Telecommunication Skills

Wed Jan 14 - Mar 18 (10 sessions/25 hours)
5:45 pm - 8:15 pm \$240 A16WRT002A

ASDA Level III - Reading

For advanced beginner readers, practice reading both fiction and non-fiction; discuss your understanding; write summaries and reactions; and answer questions about what you have read. You will also learn how to use a dictionary to select appropriate definitions of words. For students who score between a 2 and 3 on the TABE.

Tues & Thurs Jan 13 - Mar 24 (20 sessions/25 hours)
5:45 pm - 7:00 pm \$240 A16RDG003A

ASDA Level III - Writing

For advanced beginner writers further develop your fluency, clarity and correctness through participation in the writing process and explicit grammatical instruction. You will write and revise 3 short personal essays. In addition, you will learn how to place words and phrases from model essays into their correct position on grammar worksheets and use correction symbols to correct your own mistakes. Co-requisite: Introduction to Personal Computers & Basic Word Processing.

Tues & Thurs Jan 13 - Mar 24 (20 sessions/25 hours)
7:15 pm - 8:30 pm \$240 A16WRT003A

ASDA Level IV - Reading

In order to improve your reading fluency and comprehension, you will read one full-length work of fiction, as well as short stories and non-fiction pieces. You will discuss your understanding, write summaries and reactions, and answer questions about what you have read, as well as learn how to use a dictionary to select appropriate definitions of words. For students who score between 3 and 4 on the TABE.

Wed Jan 14 - Mar 18 (10 sessions/30 hours)
5:45 pm - 8:45 pm \$285 A16RDG004A

ASDA Level IV - Writing

Make personal connections with the fiction and/or nonfiction you are reading by writing 3 short essays, using the writing process approach. In addition, you will analyze English grammar through an X-Word grammar approach and see the application of grammar in model essays and your own essays.

Tues & Thurs Jan 13 - Mar 24 (20 sessions/60 hours)
5:45 pm - 8:45 pm \$575 A16WRT004A

ASDA Level V - College Prep - Reading and Writing

Become prepared for college-level reading and writing. You will write 3 essays that use readings to prove a thesis. Readings will be drawn from short stories, articles and/or novels. You will learn to edit your essays through the application of X-Word grammatical structures. Course grades will be determined by attendance, response to peer writing, grades on reading and grammar quizzes, and overall improvement in essay quality.

Tues & Thurs Jan 13 - Mar 24 (20 sessions/50 hours)
5:45 pm - 8:15 pm \$480 A16RDW005A

Basic Skills in Reading (BSR)

This reading class will help you gear up your skills in preparation for college entry. You must possess a high school or equivalent diploma. You will read a combination of narrative and expository prose, summarize your readings, and answer comprehension questions about the content read. This course is offered through the college's Academic Affairs Division. Please contact Kim Lucas, Academic Counselor, for an appointment at TTY: 718-482-5311 or email: KIMLUC@lagcc.cuny.edu.

Mon, Tues, Wed, Thurs & Thursday
(3:25 pm - 4:25 pm) Mar 9 - Jun 8
(60 sessions/60 hours)
9:15 am - 10:15 am \$530 A16RDG005A

Basic Skills in Writing (BSW)

This writing class will help you gear up your skills in preparation for college entry. You must possess a high school or equivalent diploma. You will write 10 essays, most based on course readings. X-Word grammar will be taught and applied to all essays. This course is offered through the college's Academic Affairs Division. Please contact Kim Lucas, Academic Counselor, for an appointment at TTY: 718-482-5311 or email: KIMLUC@lagcc.cuny.edu.

Mon, Tues, Thurs & Thurs 4:35 pm-5:35 pm
Mar 9 - Jun 8 (48 sessions/84 hours)
10:30 am - 12:45 pm \$530 A16WRT005A

Academic Studies for Deaf Adults (ASDA) English Literacy Program - Individual Instruction

One-to-one instruction is provided to Deaf, Deaf-Blind, Hard-of-Hearing, and late deafened adults to assist them in all educational needs, such as Regent's Competency Exam Preparation; GED Exam preparation; ASL for Deaf International Students; specific academic needs; and American Citizenship preparation. These one-to-one sessions can be scheduled at any time, depending on the teacher's availability. An interview and diagnostic assessment of needs and goals might be performed. A special individualized program can be created for you and offered in 6, 12 and 18 2-hour sessions. An individualized program with dates will be arranged upon full payment.

Individual Instruction (I) - 2 Hours

You will receive 2 hours of diagnostic assessment.

Jan 12 - Mar 27 (1 session/2 hours) - \$100 A16PDV001A

Individual Instruction (II) - 12 Hours

You will receive 6 two-hour sessions of one-to-one instructions.

Jan 12 - Mar 27 (6 sessions/12 hours) - \$900 A16PDV002A

Individual Instruction (III) - 24 Hours

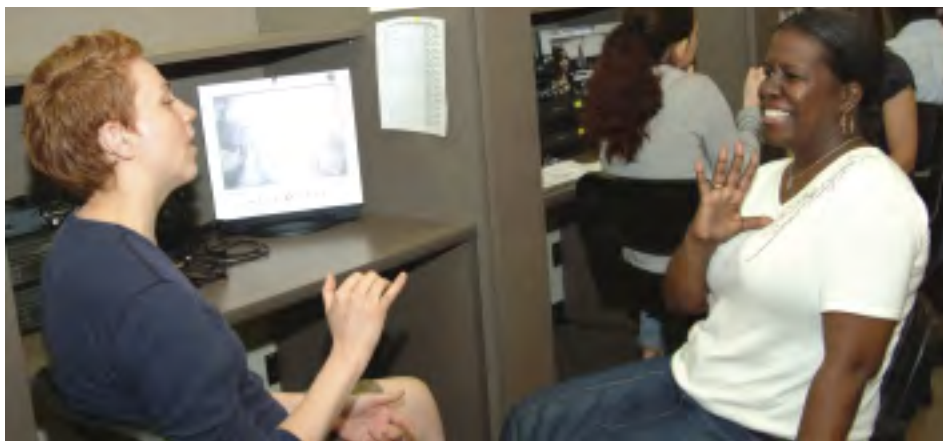
You will receive 12 two-hour sessions of one-to-one instructions.

Jan 12 - Mar 27 (12 sessions/24 hours) \$1800 A16PDV003A

Individual Instruction (IV) - 36 Hours

You will receive 18 two-hour sessions of one-to-one instructions.

Jan 12 - Mar 27 (18 sessions/36 hours) \$2600 A16PDV004A



Academic Studies for Deaf Adults (ASDA) Math Literacy Program

The ASDA Math program offers 3 levels of math classes that are designed to help you practice your computational skills using a variety of mathematical problems that can be applied in the work world or as preparation for the GED math exam. The program requires placement testing prior to registration for an appropriate level. To schedule an appointment for the testing, please contact Roxann Richards-Chattoo at Program for Deaf Adults: rrichards@lagcc.cuny.edu or (866) 553-3609 (Direct VP).

Academic Studies for Deaf Adults: Math Level 1

ASDA Math Level 1 focuses on Basic Mathematics: addition and subtraction of whole numbers, multiplication and division of whole numbers and word problems.

Mon Jan 5 - Mar 23 (10 sessions/25 hours)
5:45 pm - 8:30 pm \$240 A16MAT011A

Academic Studies for Deaf Adults: Math Level 2

ASDA Math Level 2 focuses on Pre-GED Mathematics: decimals, fractions, percents, introduction to probability, measurement, and word problems.

Mon Jan 5 - Mar 23 (10 sessions/25 hours)
5:45 pm - 8:30 pm \$240 A16MAT012A

Academic Studies for Deaf Adults: Math Level 3

ASDA Math Level 3 focuses on GED Mathematics: the mathematics of probability, ratio and proportion, percents, measurements, graphs and tables, graphs and tables, basics of algebra, geometry, special topics in algebra and geometry, and word problems.

Mon Jan 5 - Mar 23 (10 sessions/25 hours)
5:45 pm - 8:30 pm \$240 A16MAT013A

GED Bridge to College for Deaf Adults

These classes are for Deaf adults with a 7th grade or higher reading level. Instruction focuses on basic math, reading and writing in the context of the subject areas covered by the GED exam (social studies, science, language arts, reading and writing). Classes meet for three 3-hour evening sessions per week for three semesters. Come to information and assessment sessions in room C-203 on December 8, 1-5 pm. You will take a reading pre-placement test. If you qualify, you must then take the five free GED predictor tests during the week of December 8 - 11. RSVP for the information and testing sessions to Roxann Richards-Chattoo at Program for Deaf Adults (RRichards@lagcc.cuny.edu or (718) 482-5353 VP/TTY). If you've taken the GED exam before, please bring your old scores.

The cost is \$99 per semester (including books and screening materials).

Tues, Wed & Thurs Jan 6 - Mar 31
(36 sessions/108 hours)
5:45 pm - 8:45 pm \$99 A16GED001



Register Online
<http://www.peopleware.net/ace>

FACT

PDA offers the most programs and services for Deaf and Hard-of-Hearing students in CUNY.

Continuing Education for Deaf Adults

This program is offered to Deaf students who wish to have an opportunity for vocational training and personal enrichment.

Is Teaching ASL in Your Future?

If you are fluent in American Sign Language and wondering how to become an ASL teacher, this class is for you! In this first of a three-part professional development workshop, you will review linguistic features of ASL and perform assessment activities to enhance expressive and receptive skills. You will also learn how to apply ASL linguistics to strengthen your pedagogy, and the course can prepare you to become certified to teach ASL. Topics include phonology, morphology, syntax, semantics and language in use. Prerequisite: minimum 3 years ASL usage.

Saturday & Sunday (9 am - 1 pm) Jan 31 - Feb 1
 (2 sessions/12 hours)
 9:00 am - 5:00 pm \$300 A16PDV010

Developing Your ASL Teaching Portfolio

Explore and examine meaningful and effective teaching tools, techniques and materials in this two-day intensive workshop designed for American Sign Language teachers to promote excellence in teaching, enhance students' learning, and cultivate a support network with instructors in the region that value growth and professionalism. Those interested in ASL Teacher Association (ASLTA) certification will benefit by reflecting on, collecting and documenting their teaching experiences.

Saturday & Sunday (9 am - 1 pm) Feb 7 - Feb 8
 (2 sessions/12 hours)
 9:00 am - 5:00 pm \$300 A16PDV011

Job Readiness Skills for Deaf Adults

Develop the skills and strategies needed to secure a job. You will learn to perform a self-assessment of your personal skills; develop a resume and cover letter; and promote yourself through employment searches, interviews, and networking in a competitive job market. You will also learn about job accommodations under Title I of Americans with Disabilities Act and will have access to LaGuardia's Workforce1 Center for services, including job placement.

Mon & Wed Jan 12 - Mar 25 (20 sessions/30 hours)
 3:30 pm - 5:00 pm \$375 A16CRD001A



Computer Skills Program for Deaf Adults

The Computer Skills Program for Deaf Adults includes 4 sequential courses and focuses on the development of skills necessary for effective communication in both personal and professional settings. You will be able to build your typing speed; knowledge of basic computer skills; and word processing skills.

Basic ePortfolio and PowerPoint Presentation for Deaf Adults

Looking for a job or career advancement? Learn to create your own ePortfolio, which can include your educational background, academic studies, job resume and educational goals. You will be encouraged to think about learning in a broad context of family, career, culture and experience. You'll also learn how to use and incorporate PowerPoint Presentation in your ePortfolio. Prerequisite: For Deaf adults who communicate in American Sign Language and have basic computer skills.

Sat Jan 10 (1 session/4 hours)
 1:00 pm - 4:00 pm \$185 A16OSK005A

Keyboarding and Telecommunication Skills

For Deaf adults who want to learn to use a teletypewriter device (TTY), a videophone and a computer with Internet access. Topics include computer-assisted instruction in basic keyboarding skills, improvement of speed typing, and the appropriate etiquette and techniques of using telecommunication. This course is a prerequisite for other computer-related and writing classes, and will help prepare you to communicate efficiently in the workplace.

Sat Jan 17 - Mar 14 (8 sessions/32 hours)
 9:00 am - 1:00 pm \$300 A16OSK001A

Introduction to Personal Computers and Basic Word Processing

For Deaf adults who want to become familiar with the use of a personal computer and basic word processing applications. You must type at least 20 words per minute and have good English skills. This class is a co-requisite for all computer skills and ASDA Level 3 - 5 writing classes. It will help you in finding a job, or to advance in your current job.

Sat Jan 17 - Mar 14 (8 sessions/18 hours)
 10:00 am - 12:15 pm \$190 A16OSK002A

American Sign Language

The American Sign Language Program involves a 5-course sequence focusing on communication with Deaf individuals. Using the Vista Signing Naturally Curriculum, you will learn to improve your receptive and expressive ASL and fingerspelling skills. You will also acquire sign vocabulary, learn about Deaf Culture, and practice ASL grammar, including structure development and related facial/gestural expressions and conversational behaviors. You will have access to a state-of-the-art ASL Language Lab. If you have already started your sign language education, you will be screened for appropriate level placement. You will have an opportunity to enhance your skills in 4 different ASL workshops; continue your learning in Intensive Study in ASL Levels 2-4; progress into a pre-interpreting program by taking Advanced ASL Levels I and II; and ultimately enroll in a two-year ASL/English Interpretation Program at LaGuardia. For more information, visit <http://ace.laguardia.edu/ASL>.

Introduction to American Sign Language Workshop

Interested in learning American Sign Language? Find out how to become a fluent communicator or make a career from your ASL skills by attending our FREE introductory workshop. If you are registering for an ASL class in Program for Deaf Adults for the first time, it is strongly recommended that you attend this workshop, which introduces our teaching philosophy of ASL and Deaf Culture and includes a visit to the state-of-the-art ASL Language Lab. Please RSVP with Roxann Richards-Chattoo for the workshop. To schedule an appointment for your placement into an appropriate ASL level if you have taken a class elsewhere, please call (866) 553-3609 or rrichards@lagcc.cuny.edu.

Wed Jan 7 (1 session/1.5 hours)
5:45 pm - 7:15 pm \$0 A16ASL000A

American Sign Language Levels 1 - 5 (ASL 1 - 5)

In this 5-course sequence you will cover basic receptive and expressive ASL and fingerspelling skills; classroom activities and exercises at the state-of-the-art ASL Language Lab; basic sign vocabulary; ASL grammar, basic aspects of Deaf Culture, and more.

Level 1
Sat Jan 17 - Mar 14 (8 sessions/24 hours)
9:15 am - 12:15 pm \$230 A16ASL001A

Level 2
Sat Jan 17 - Mar 14 (8 sessions/24 hours)
9:15 am - 12:15 pm \$230 A16ASL002A

Level 3
Sat Jan 17 - Mar 14 (8 sessions/24 hours)
9:15 am - 12:15 pm \$230 A16ASL003A

Level 4
Sat Jan 17 - Mar 14 (8 sessions/24 hours)
9:15 am - 12:15 pm \$230 A16ASL004A

Level 5
Sat Jan 17 - Mar 14 (8 sessions/24 hours)
9:15 am - 12:15 pm \$230 A16ASL005A



American Sign Language, Levels 1 & 2 (Wed. section)

Please note that Levels 3, 4 and 5 are offered on Saturday mornings only.

Level 1
Wed Jan 21 - Mar 11 (8 sessions/24 hours)
5:45 pm - 8:45 pm \$230 A16ASL001B

Level 2
Wed Jan 21 - Mar 11 (8 sessions/24 hours)
5:45 pm - 8:45 pm \$230 A16ASL002B

Intensive Study in American Sign Language Program

This program's 3 courses, including in-class and lab components, are offered jointly with the college's Department of Education and Language Acquisition. These courses are designed for those who wish to make rapid progress in developing ASL skills and expand their multicultural sign vocabulary, but do not wish to earn academic credit. You will have access to the state-of-the-art ASL Language Lab. All continuing education students are required to be assessed through an intensive screening (fee is \$50, which is non-refundable and must be paid in advance). See details below. Note: If you don't have a college degree or academic credits and wish to earn them for these courses, you must be admitted to the college for the fall or spring semester and are not required to be intensively screened. For more information, please contact Carole Lazorisak at Academic Department of Education and Language Acquisition in room E-200 or e-mail carolel@lagcc.cuny.edu.

Intensive Screening

All continuing education students are required to be assessed through an intensive screening prior to registering for any of Intensive Study in ASL Levels 2, 3, and 4 classes. Call Roxann Richards-Chattoo at (866) 553-3609 for an ASL screening appointment.

Wed Dec 10 from 5-7 pm Sat Dec 13 from 1-3 pm
Wed Feb 18 from 5-7 pm Sat Feb 21 from 1-3 pm
(1 session/0.5 hrs) \$50 A16ASL010A

Intensive Study in American Sign Language - Level 2

This course is a continuation of American Sign Language 1, with emphasis on vocabulary building in conjunction with appropriate use of the body and grammatical patterns.

Mon & Wed Jan 5 - Feb 18 (12 sessions/36 hours)
5:45 pm - 9:05 pm \$320 A16ASL012A

Mon & Wed Mar 9 - June 8 (24 sessions/36 hrs)
6 pm-7:30 pm \$320 A16ASL012A

Intensive Study in American Sign Language- Level 3

Begin to apply some of the vocabulary and grammatical principles of American Sign Language learned in ASL I and ASL II in a conversational context. You will become acquainted with a variety of ASL communication styles and dialects used by Deaf people.

Mon & Wed Mar 9 - June 8 (24 sessions/36 hours)
7:30 pm - 9:00 pm \$320 A16ASL013A

Intensive Study in American Sign Language- Level 4

This course builds on the vocabulary and grammar learned in ASL 1 through 3. Language skills will be refined in the areas of complex non-manual grammatical markers, advanced ASL spatial rules, classifiers (particularly as used for descriptions of small items, people, cars, and places), and adverbial modifiers for small items and details. You will be able to use ASL in a variety of discourse styles, such as persuasion, negotiation, problem-solving, giving directions, and dialogue. Upon completion, your ability to communicate with Deaf persons will be enhanced.

Tue Mar 10 - June 2 (12 sessions/36 hours)
5:45 pm - 8:45 pm \$320 A16ASL014A

Baby Fingers Mommy & Me Sign Language Program

Learn sign language through songs and musical play with other families. Whether you intend to incorporate sign language into your life long term, or simply during this pre-verbal/verbal development stage, watch in awe as your baby discovers the world of sign language. See your child develop his or her vocabulary as music and sign language both aid in his/her development. The tuition for Baby Fingers classes is \$169 per family, consisting of up to two adults and one child (hearing or Deaf); for your second child receive a 50% discount.

FREE WORKSHOP



Introduction to Baby Fingers

RSVP for this workshop is strongly recommended; call Roxann Richards-Chattoo at (866) 553-3609 or email richards@lagcc.cuny.edu. For more information, contact Program for Deaf Adults, Room C-203.

Sat Jan 10 (1 session/1 hours)
10:30 am - 11:30 am FREE A16PEN000A

Baby Fingers Mommy & Me Sign Language - Level One

This class is part one in a 3-course sequence designed for newborns through 15 months. It covers "need based" vocabulary, such as "milk" and "apple."

Sat Jan 17 - Mar 14 (10 sessions/10 hours)
10:30 am - 11:30 am \$169 A16PEN001A

Baby Fingers Mommy & Me Sign Language - Level Two

This class is part two in a 3-course sequence designed for young toddlers, 1 to 2 years of age. It teaches vocabulary that is "interest based," with review of the basic signs, such as animals, transportation, food and color signs.

Sat Jan 17 - Mar 14 (10 sessions/10 hours)
11:30 am - 12:30 pm \$169 A16PEN002A

Baby Fingers Mommy & Me Sign Language - Level Three

This class is part three in a 3 course sequence designed for older toddlers, 16 months through 3 years of age. It focuses on combining words and signs, and developing more complex language through storytelling, games, songs and dramatic play.

Sat Jan 17 - Mar 14 (10 sessions/10 hours)
12:30 pm - 1:30 pm \$169 A16PEN003A

Creative Play: American Sign Language for Kids, 2 - 6 yrs old

Children will explore basic sign language vocabulary related to their favorite storybooks, songs and neighborhood places. They will learn to feel comfortable and confident responding to the teacher in sign language and engaging peers using the basic signs. They will also be able to integrate what they learn in class at home, e.g., reading a book or playing dress up while incorporating basic American Sign Language.

Sat Jan 24 - Mar 21 (8 sessions/8 hours)
9:30 am - 10:30 am \$169 A16ASL020A

